

Floor Box Accessory Plates

	250 x 250mm	300 x 300mm	Description
	Ega - RAP 03/03	Ega - RAP 03/04	Plate for MK 13 2532A 2 Gang SSO
	Ega - RAP 02/03	Ega - RAP 02/04	Plate for MK 13 2531A 1 Gang SSO
	Ega - RAP 58/03	Ega - RAP 58/04	4 x LJU6C Aperture (22x37)
	Ega - RAP 60/03	Ega - RAP 60/04	2 x 50 x 50mm Aperture
	Ega - RAP 01/03	Ega - RAP 01/04	Blank plate

Power Modules



2532 WHI
13A 2 gang
switchsocket



2531 WHI
13A 1 gang
switchsocket



K5830 WHI
1 Gang Euro 2
module
13 amp



K5832 WHI
American 2P+E
15 amp 127V
shuttered

Data Modules

Euro Module

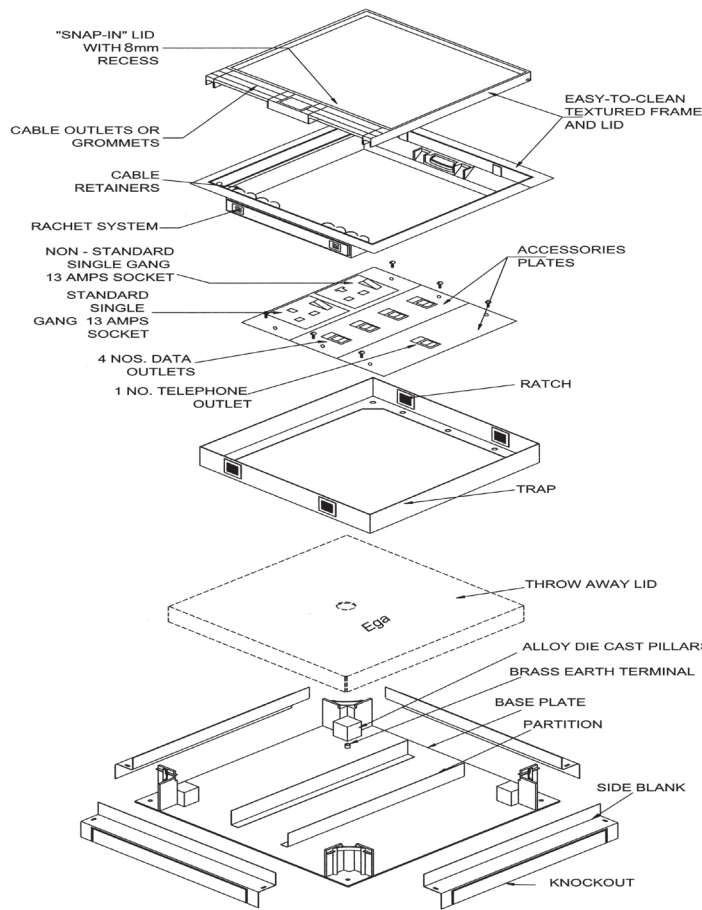


K5846 WHI
RJ45 cat 6
one module
(25 x 50mm)

LJU6C Module



K5746 WHI
RJ45 Cat 6
one module
(22 x 37mm)



Exploded view of service box



by Honeywell

Regional Office (Middle East) Honeywell Middle East Environmental and Energy Solutions, EMAAR Business Park, Building 2, Level 2 Office 201, Sheik Zayed Road, P.O.Box 232362, Dubai, UAE	Telephone: +971 4 450 5800	Facsimile: +971 4 450 5900
	Website: www.me.mkelectric.com	
KSA Area Office 5th Floor, Taawonieh Northern Tower P.O. Box 56106, Riyadh, 11554, KSA	Telephone: +966 11 434 6888 +966 11 434 6817	Facsimile: +966 11 434 6889
	Website: www.me.mkelectric.com	
Jeddah Office Steen Street, Darrajah Square, L/G Building, 3rd Floor, Office 303 P.O. Box 8589, Jeddah 21492, Saudi Arabia	Telephone: +966 12 617 8117 +966 12 617 8114	Facsimile: +966 12 617 8277
	Website: www.me.mkelectric.com	
Qatar Area Office P.O. Box 63757, Al Whada Street 391 Ammwal Tower, 5th Floor, Doha - Qatar	Telephone: +974 440 66200	Facsimile: +974 440 66202
	Website: mkenquiries.me@honeywell.com	

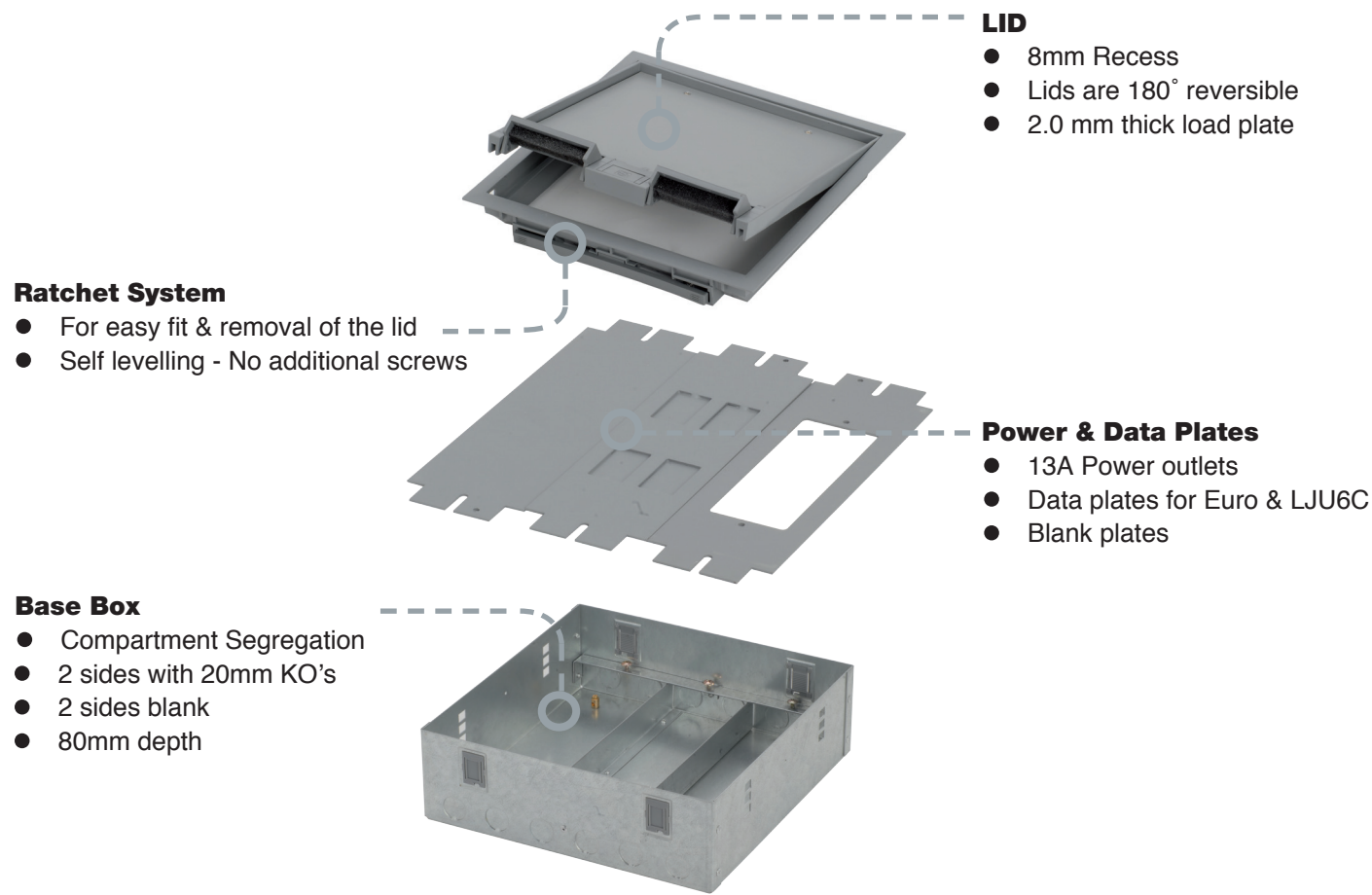
Registered Office: Honeywell House Arlington Business Park Bracknell Berkshire RG12 1EB Registered No. 189291 Publication No.: MKMEEGAFDS1216

Email: eccsales.me@honeywell.com



Cable Management

Raised Floor Service Outlets



Ega Raised Floor Service boxes provide the end user with the desired flexibility. The cables are run beneath the raised floor and the access above the raised floor is achieved using raised floor boxes. The salient features of the boxes are :

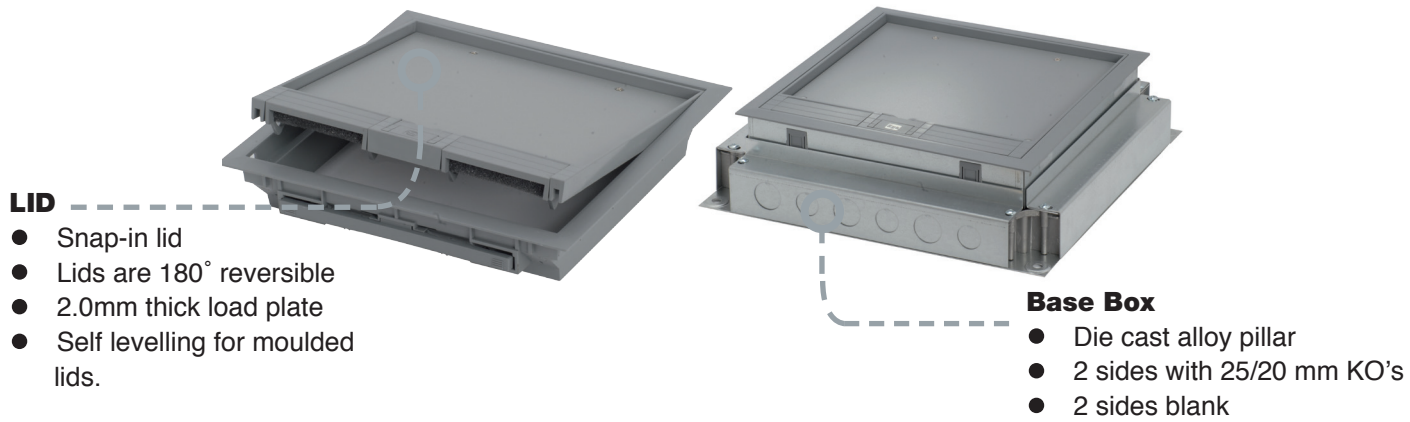
- 'Snap-in' lid, incorporating a steel reinforcing plate, is reversible allowing easy access to the floor boxes.
- Lid is recessed to accommodate carpet/tile finish up to 8mm.
- Frame is 180 reversible, incorporating a ratchet system designed to self adjust to any floor thickness.
- Cable retainers allow easy cable guiding and the cord cap locks into position when cables are present to prevent damage.
- Boxes are supplied with an adjustable mounting bracket fixed to each of the two short sides to accommodate any floor thickness.
- Boxes are supplied with KO's on two sides for easy flexible conduit entry.
- Wide range of power and data plates are available for any combinations.



Part No.	Description
Ega3/91506- GRY*	250 x 250 x 80 mm 3 compartment Raised Floor Service Box with ABS lid - 8mm recess

*Excludes accessory plates. Refer page 5 for plate selection.

In Screed Service Outlets



Ega In Screed Service outlet boxes provide the end user with a robust, easy to use product.

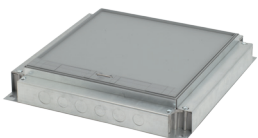
- Standard two size offering - 250x250mm & 300x300mm
- 2 options of screed depth - 75 - 60mm & 90 - 75mm.
- Standard recess options of 8mm & 12mm for carpet and tile inlay.
- Base unit is made of high quality pre galvanised steel and high pressure die cast alloy pillars for load bearing.
- Box supplied with 25/20mm KO's on two sides (two sides blank).
- Brass terminal for earthing.
- For 250x250mm, 8mm recess box, the lid and ratchet are manufactured from flame retardant ABS material.
- The lid is reinforced with 2.0mm thick steel plate to withstand heavy load.
- Ratchet arrangement for self adjusting to any floor finish.
- For 300x300mm and 12mm recess box, the lid is made of Galvanised Iron (GIE) & is epoxy coated to provide extra corrosion resistance.



Part No.	Description
Ega-ESB1/3/250*	250 x 250 mm 3 comp UF Service Box (75-60 mm) with ABS lid 8 mm recess
Ega-EXSB1/3/250*	250 x 250 mm 3 comp UF Service Box (90-75 mm) with ABS lid 8 mm recess



Part No.	Description
Ega-ESB1/3/250 GIE R12*	250 x 250 mm 3 comp UF Service Box (75-60 mm) with GIE lid 12 mm recess
Ega-EXSB1/3/250 GIE R12*	250 x 250 mm 3 comp UF Service Box (90-75 mm) with GIE lid 12 mm recess



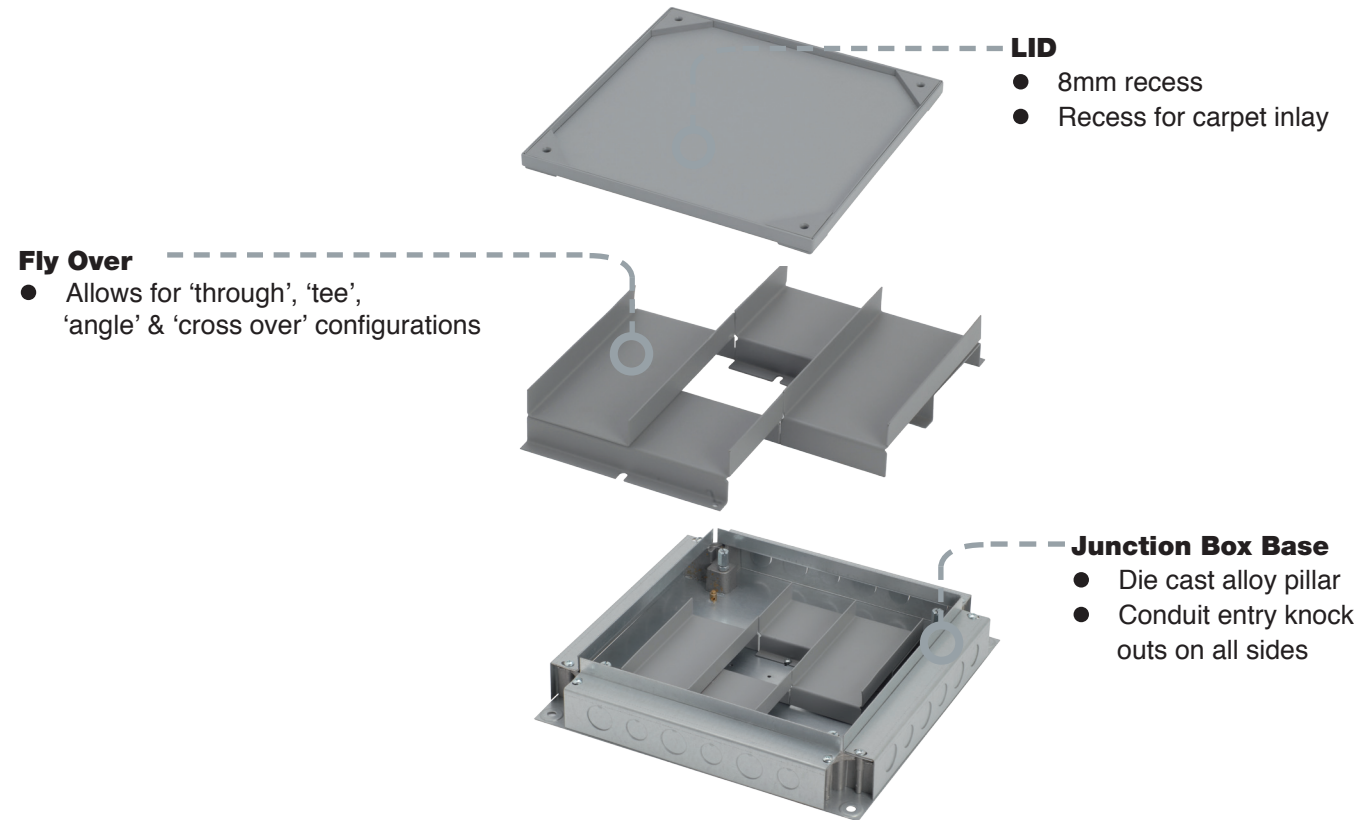
Part No.	Description
Ega-ESB3/300 GIE R8*	300 x 300 mm 3 comp UF Service Box (75-60 mm) with GIE lid 8 mm recess
Ega-EXSB3/300 GIE R8*	300 x 300 mm 3 comp UF Service Box (90-75 mm) with GIE lid 8 mm recess



Part No.	Description
Ega-ESB3/300 GIE R12*	300 x 300 mm 3 comp UF Service Box (75-60 mm) with GIE lid 12 mm recess
Ega-EXSB3/300 GIE R12*	300 x 300 mm 3 comp UF Service Box (90-75 mm) with GIE lid 12 mm recess

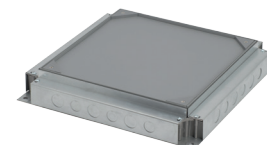
*Excludes accessory plates. Refer page 5 for plate selection.

In Screed Junction Box



Ega In Screed Junction Boxes provide the required routing of cables through well designed flyovers for change of direction

- Two standard size offering - 250x250mm and 300x300mm.
- Junction Box has pre-galvanised lid that is designed to withstand heavy loads.
- Lid is supplied with standard 8mm recess for carpet / tile application.
- The base box has four high pressure die cast alloy pillars for supporting the lid.
- Lid and flyover are manufactured from pre-galvanised sheet steel and is epoxy coated for corrosion resistance.
- Brass terminal for earthing.
- Box supplied with 25/20mm knock outs on all four sides.



Part No.	Description
Ega-EJB3/250	250 x 250 mm 3 comp Under Floor Junction Box (75-60 mm) with lid8-mm recess
Ega-EXJB3/250	250 x 250 mm 3 comp Under Floor Junction Box (90-75 mm) with lid8-mm recess



Part No.	Description
Ega-EJB3/300	300 x 300 mm 3 comp Under Floor Junction Box (75-60 mm) with lid8-mm recess
Ega-EXJB3/300	300 x 300 mm 3 comp Under Floor Junction Box (90-75 mm) with lid8-mm recess