

MULTI ROOM IP CONTROLLER

INTEGRATED ROOM MANAGEMENT WITH BACNET/IP

Benefit from cross-application control, IP-based operation and increased transparency for optimal energy management.

MULTI ROOM IP CONTROLLER (EHNX)

Integrated Room Management

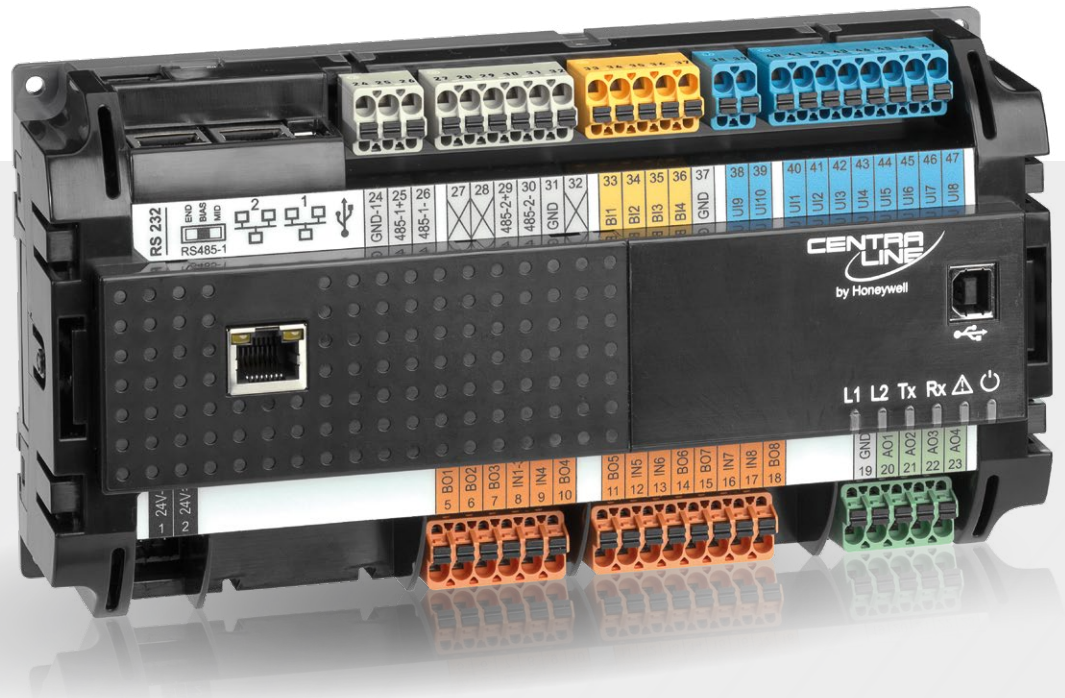
With the ability to manage across multiple applications, the all-in-one MULTI ROOM IP CONTROLLER offers heightened efficiency benefits thanks to its universal Niagara framework and application library. The IP-based operation workflows and transparent energy management help reduce overall operational costs.

NIAGARA
EXTENDED

ASHRAE
BACnet[™]


enocean[®]

 **Modbus**



CentraLine's MULTI ROOM IP CONTROLLER is a powerful BACnet/IP-based room management, ideal for cross-application room controls and the utilization of existing IP networks. It offers multitude of benefits, including:

Enhanced energy efficiency

As a freely programmable controller, it supports any application requirement across heating, ventilation, air conditioning (HVAC) as well as lighting and shading controls for higher energy efficiency.

Flexible handling

Benefit from the best of both worlds with remote connectivity via browser or freely selectable wall modules to meet the exact functionality requirements your project requires.

Extensive operational cost reduction

The controller connects with modern field devices as well as legacy systems – optimising the total energy consumption and the overall operational cost of your application.

Up to 50 % more engineering efficiency

Save valuable programming and testing time with single-tool engineering featuring an application library for unparalleled efficiency and reliability.

Cost-effective installation and commissioning

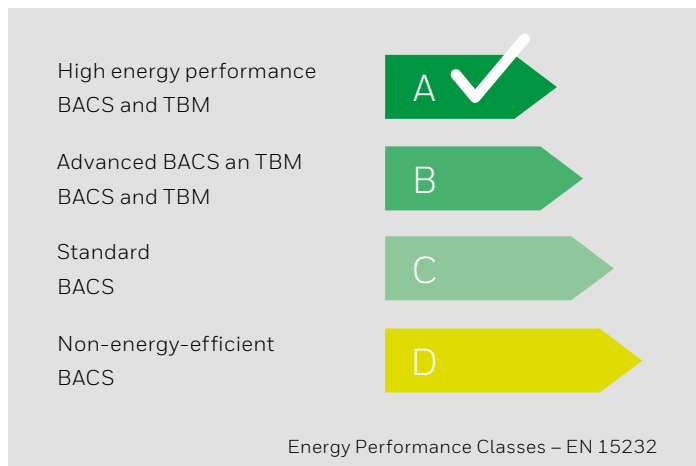
The BACnet IP based platform and wireless solutions via EnOcean ensure an economically feasible installation and commissioning for both new construction and refurbishments.

Enhanced energy efficiency

MULTI ROOM IP CONTROLLER offers the highest possible energy efficiency classification 'A' according to the EN 15232 which enables up to 30 % energy cost savings but also maximizing comfort and well-being.

What's more, it reduces energy usage via:

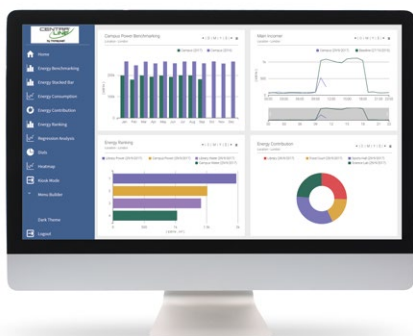
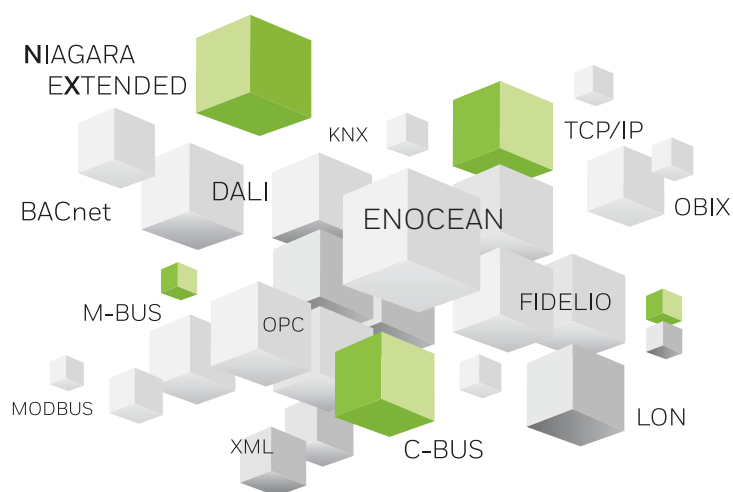
- **Common control strategies** across HVAC, lighting and shading
- **Demand-based energy generation** for optimized cooling/heating down to the plant control level
- **Application flexibility** to freely program requirements, even customizable by room



Extensive operational cost reduction

Maximum flexibility for integration

The controller connects and translates data from nearly any device or system into universal IP protocols through the Niagara framework. Whether new or legacy systems, the controller optimises the total energy consumption and the overall operational cost of your application.



Comprehensive energy management

ENERGY MANAGER, the superb energy management suite, can run on the controller to analyze and optimize the operation of your facility and reduce energy spent:

- Reports can be viewed on any device that supports HTML5
- Energy Management System according to ISO 50001 can be established
- Controller can automatically react to anomalies detected by the energy management

Easy to handle

MULTI ROOM IP CONTROLLER offers the best of both worlds with connectivity **via browser or freely selectable wall modules**. With its integrated web server, the controller can securely operate room applications from a standard PC, tablet or smartphone. Remote access allows for programming, servicing, alarm management, notifications, scheduling and trends.

Choose from a wide selection of enhanced wall modules to meet the exact design and functionality requirements a project requires. Wall modules can feature HVAC, light and blind controls in a single device - significantly reducing wiring efforts and costs.



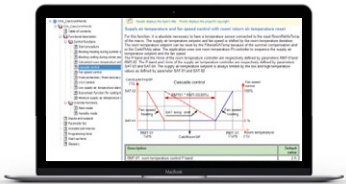
Up to 50% more engineering efficiency

Application Library

An Application Library largely supports the free programmability of the controller. In addition it ensures unparalleled energy efficiency as well as maximum application reliability.

Freely programmable

The universal Niagara framework allows perfect application coverage for any requirement, across devices and protocols.



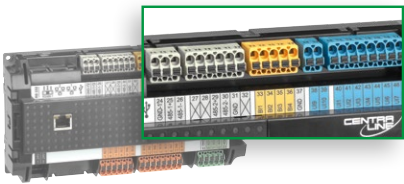
Single-tool engineering

Niagara is the ideal operational platform across room, plant & supervisor programming, as well as application testing.

Documentation Generator

Our Niagara version features an embedded Documentation Generator that automatically outputs the application specific documentation, including wiring information, graphics, function block parameters and wiresheet printouts.

Significantly reduced installation cost



Dual Ethernet ports

As the controller is equipped with dual Ethernet ports all options are open for flexible network integration and scalability for large applications

Scalable Input/Output (IO) concept

- 14 and 26 onboard IO option, avoiding separate IO modules
- Optional compact, mixed IO module
- Panel-Bus IO Concept (0 to 1000 hardware points) allowing distributed mounting of IO modules

Integrated cloud connector

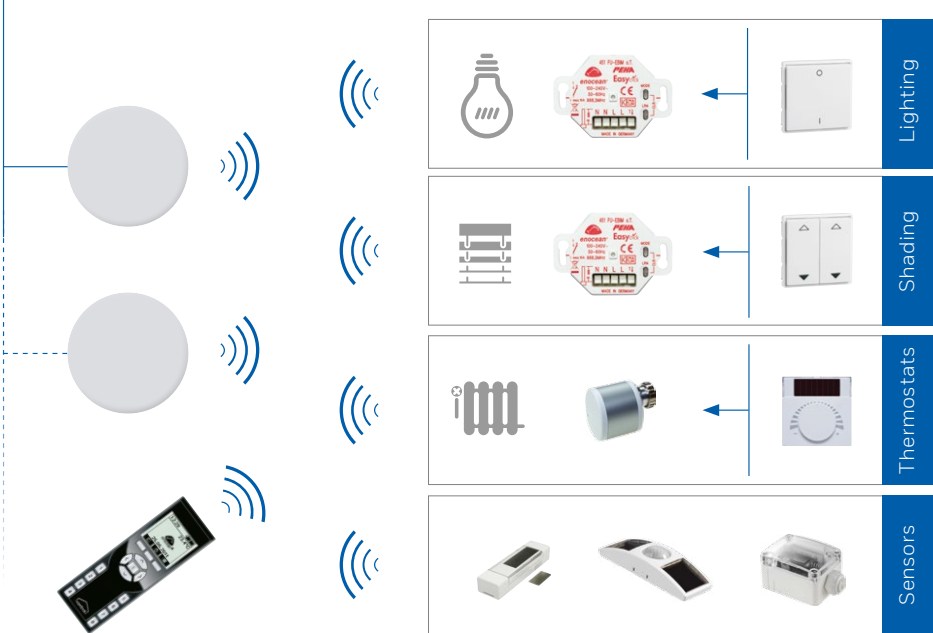
The controller features a pre-installed cloud connector allowing cloud-based monitoring and analytics services.



EnOcean integration

Seamless integration of the Honeywell PEHA EnOcean portfolio offers a multitude of benefits for new and refurbishment projects:

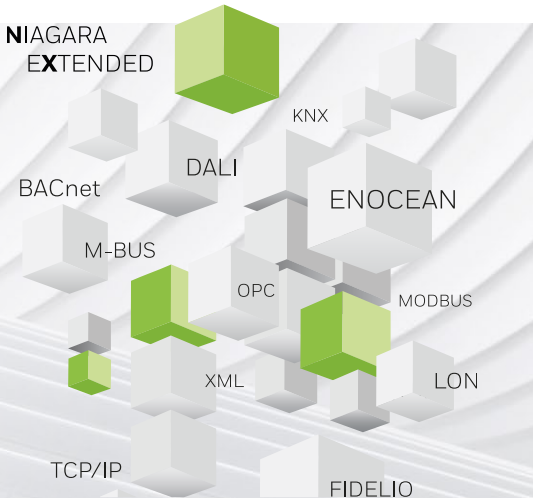
- Largely reduced installation cost as no wiring is required
- Increased flexibility to cover changing room layouts
- Complete portfolio available of wireless and batteryless switches, sensors and lighting and shading actuators
- Significantly less maintenance



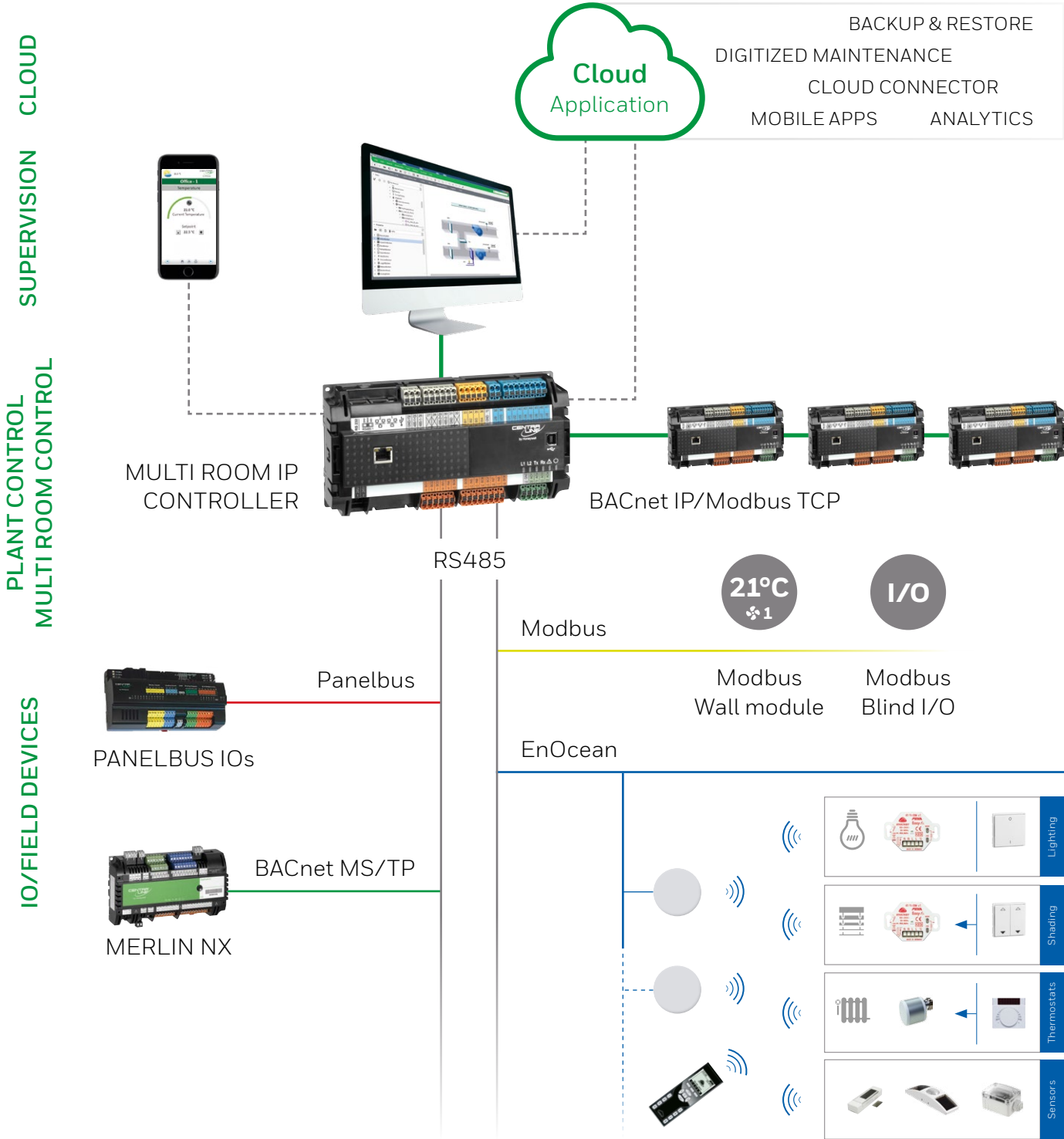
Niagara eXtended (NX)

Niagara eXtended (NX) offers Single-Tool-Engineering, covering all application needs, from room to plant control and up to supervision and cloud solutions.

It is expanded upon Niagara 4 – the industry leading platform for integrated building management – and offers as NX version additional benefits and value to CentraLine customers and partners.

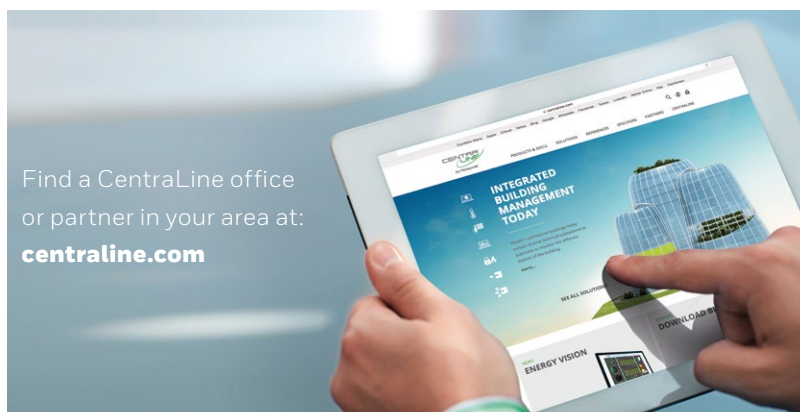
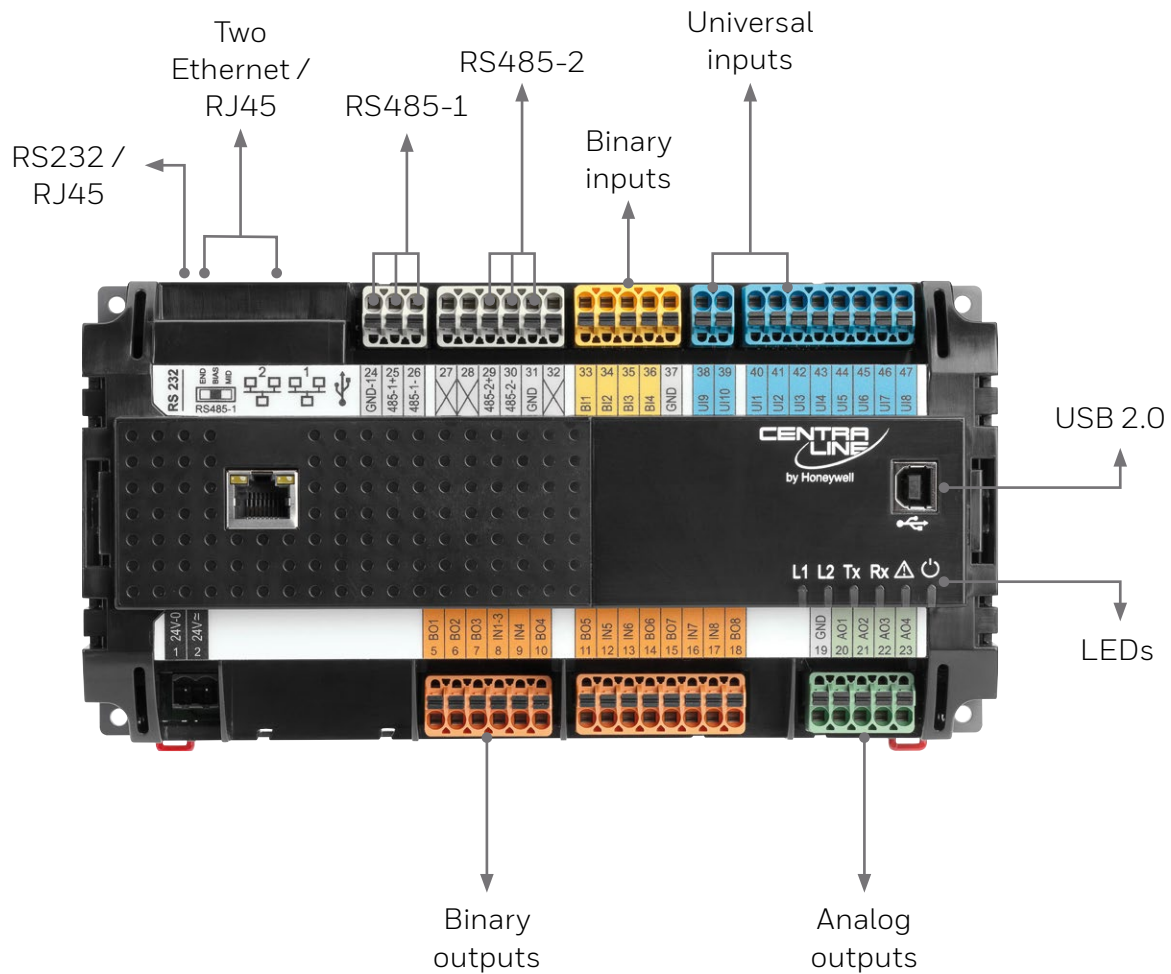


System overview



Versions	Power supply	UI	UI fix pull-up	BI	AO	BO Relay 3A	BO Relay 10A	Sum IO	Ethernet interface	RS485 interface
CLNXEH SERIES14ND	24VAC/DC	4	0	4	2	3	1	14	2	2
CLNXEH SERIES26ND	24VAC/DC	8	2	4	4	7	1	26	2	2

Details



Find a CentralLine office
or partner in your area at:
centraline.com

CENTRALINE
by Honeywell

CentralLine
Honeywell GmbH
Böblinger Straße 17
71101 Schönaich, Germany

Tel +49 (0) 7031 637 01
www.centraline.com

CentralLine is a Honeywell brand.