

Indoor Specialist Activation Devices

Single Pole Keyswitch Devices



> Product Overview

KAC's new enhanced range of single pole keyswitch devices provides switching solutions for a broad range of applications. These include fire, security, smoke vent, extinguishant systems and many other specialist applications.



> Product Benefits

Faster installation

- Simple cable access
- Surface mount for all applications

Flexible installation

- 2-position and 3-position keyswitches
- Key trapped in one position or removable in all positions
- Wide range of function markings
- Available in red and a variety of other colours subject to volumes - green, white, yellow, blue and orange

Reduced full life costs

- Rigorously tested, robust and long-life key and barrel
- Tamper resistant front
- Locknut & washer/keyway feature on barrel to prevent barrel rotating from rear
- Broad temperature tolerance

Excellent system performance

- KAC's world renowned high reliability and quality
- 3-year warranty

> Applications



KAC

SP-KEY
DS-CP-026_04

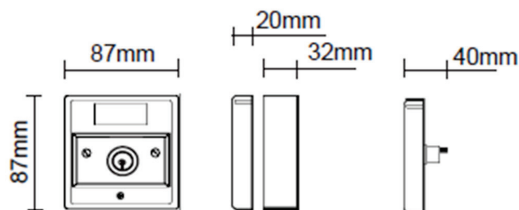
Technical Overview

The robust switching device comprises a main housing and escutcheon plate. It is fitted to the plate which simply snaps into the main housing and is permanently located in place with fixing screws. All keyswitches are supplied with 2 sturdy keys.

Electrical Specification

Maximum Voltage range: 250VAC @50HZ
Current rating: 2 Amps @250 VAC
4 Amps @125VAC

Dimensions



Environmental Specification

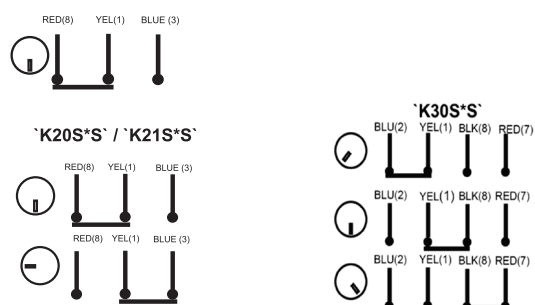
Operating Temp: -20°C to 55°C
Ingress Protection: IP24

Approvals

For RoHS, WEEE & REACH

Please visit www.kac.co.uk

Wiring Diagrams



Mechanical Specification

Colour: Red (other colours available subject to volume)
Weight (in pack box): 166g
Material: ABS

Ordering Information

AC has developed a product name/code structure which is as short and intuitive as possible, while incorporating meaning and logic.

| Device | Key | Key Position | Key Trapped/Removable | Single/Double Pole | Colour | Surface/Flush | Function Marking Examples | Example |
|--|-----|--------------------|------------------------------|--------------------|--------------------------|---------------|-----------------------------------|-----------|
| 2-position switch – key removable in all positions, single pole, red, surface mount | K | | | | | | -01 = House Flame | K20SRS-01 |
| 2-position switch – key removable in ONE position, single pole, yellow, surface mount | K | 2=2 pos 3=3 pos | 0=removable in all positions | S = Single Pole | Check available colours. | S = surface | -11 = Plain – no function marking | K21SYS-11 |
| 3-position switch – key removable in all positions, single pole, orange, surface mount | K | 7=3 pos-6500RTS | 1=trapped in position ONE | | | | -11 = Plain – no function marking | K30SAS-11 |
| 3-position 6500RTS switch – key removable in 1 position, single pole, white, surface mount | K | | | | | | -11 = Plain – no function marking | K71SWS-11 |
| | | | | | | | | |

Accessories:

Escutcheon Plates
C 787 Spare Key (2 position)
C 788 Spare Key (3 position)
PS200 Hinged Cover
P 056 Hinged Cover Seals
MUS04IW Red Surface Mounting Box (other colours available)

KAC

> Learn More: kac.co.uk