

HONEYWELL COMMAND AND CONTROL SUITE

Physical Security Information
Management Platform



THE
FUTURE
IS
WHAT
WE
MAKE IT

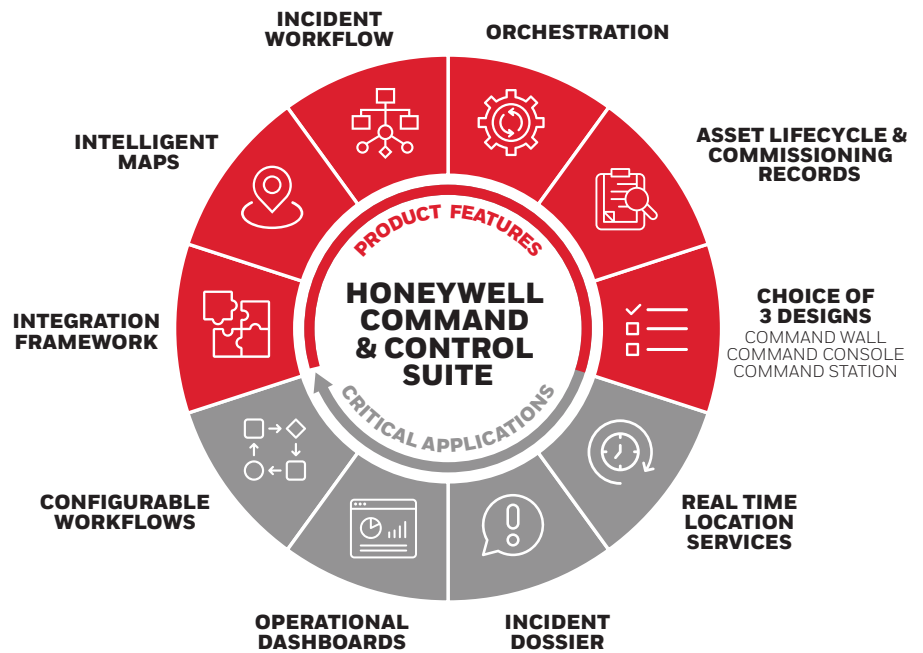
Honeywell

TECHNOLOGY ENABLING EVOLUTION

Honeywell's Command and Control Suite (CCS), a Physical Security Information Management (PSIM) platform, has been designed to empower your security operators to manage everyday operations and unexpected events more effectively.

Honeywell CCS PSIM is a powerful Physical Security Information Management platform designed to unify and simplify complex security operations. Built on the Enterprise Buildings Integrator (EBI), it integrates diverse systems, like CCTV, access control, fire alarms, and communication tools into one intuitive interface. Operators gain real-time situational awareness through intelligent maps, dashboards, and automated workflows, enabling faster, more informed decisions during incidents. With configurable procedures, centralized data management, and advanced analytics, CCS PSIM enhances efficiency, reduces false alarms, and strengthens compliance. Ideal for large enterprises and government sectors, it delivers scalable, secure, and streamlined command and control for mission-critical environments.

KEY FEATURES



INTUITIVE INTERFACE FOR DEEP INSIGHT & FAST ACTION

Integrated alarm management

Map visualisation of alarm for contextual awareness

Incident workflow & standard operating procedures

One-click call-up of associated cameras for faster analysis

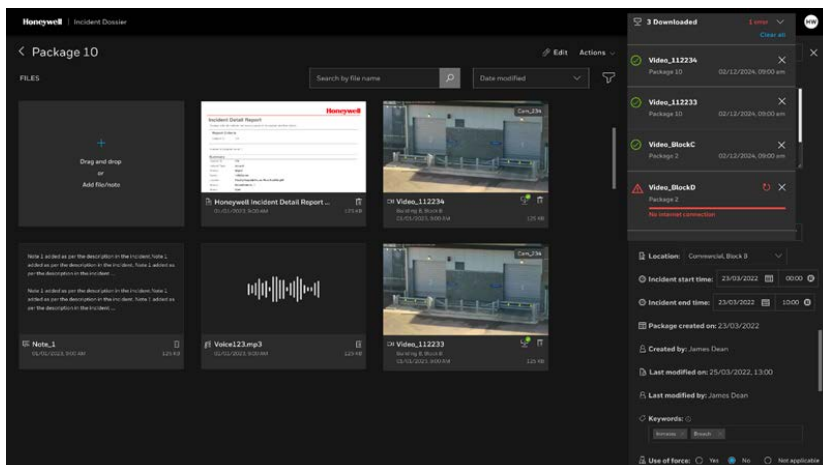
Ease of orchestration with map and video wall

Simplistic touch screen for ease of use

Configurable frequently used actions for operational efficiency, e.g. movement control

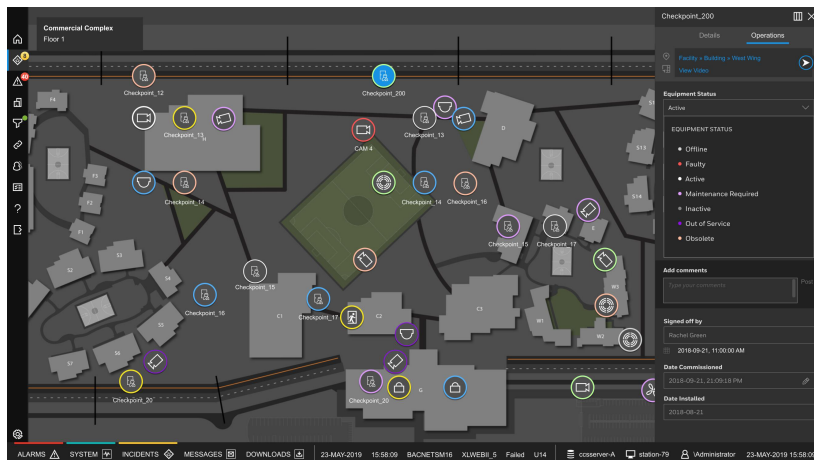
Honeywell Incident Dossier

Honeywell Incident Dossier application, enables a better transition from evidence gathering to long-term storage and analysis. By bridging the gap between initial investigation and ongoing evidence management, Incident Dossier helps enhance your evidence management process.



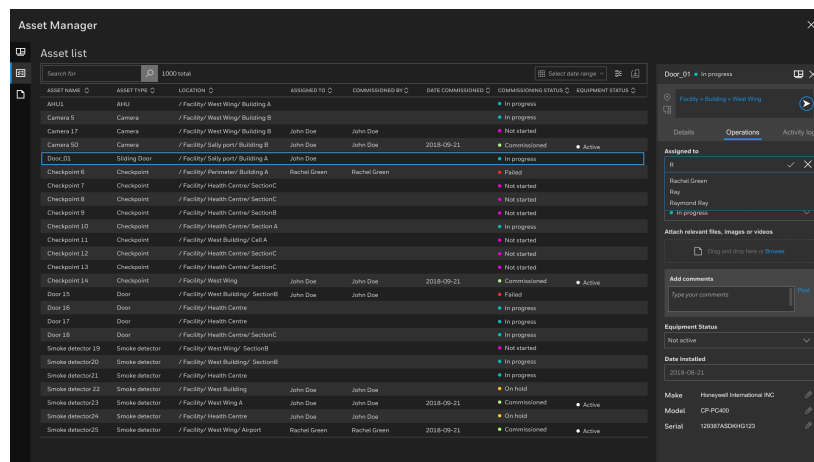
Smart Asset Lifecycle Management

The map-based smart object rings deliver an intuitive visual layer, showing real-time asset states and commissioning progress directly on the deep zoomable maps layout. Operators can instantly identify operational status, access commissioning records, and track changes across the facility, all through interactive map visuals that simplify complex asset management.



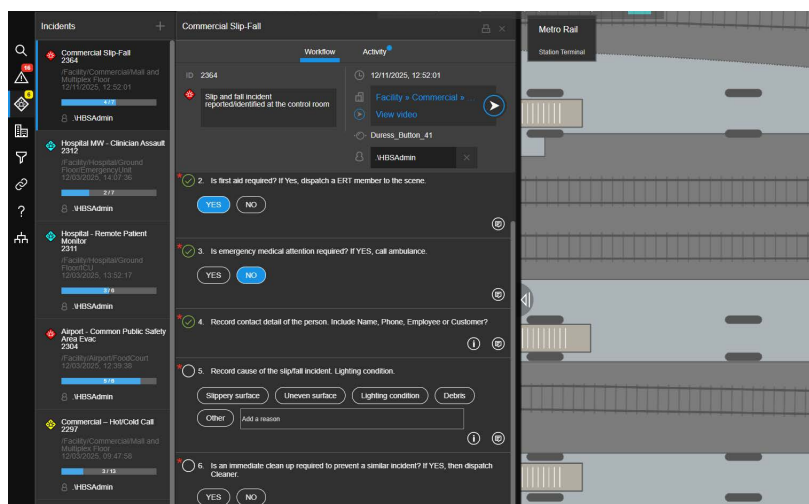
Centralize Asset Records and History

The commissioning module provides a live database view that captures every asset's make, model, and serial number alongside its commissioning status. This detailed record-keeping ensures accurate validation and life-cycle of assets, helping teams confirm that all devices are properly configured and operational. By tracking commissioning progress and asset details in real time, organizations can streamline deployments, reduce errors, and maintain full visibility across complex environments.



Dynamic Incident Workflow

Honeywell's Incident Workflow guides operators through clear, step-by-step procedures, ensuring fast, consistent actions during security events or emergencies. Integrated with alarms and maps, it delivers real-time context for smarter decisions. Connected to Honeywell's Command and Control Suite and Digital Video Manager, the workflow enables operators to visualize incidents, trigger automated controls, and manage multiple workflows simultaneously.



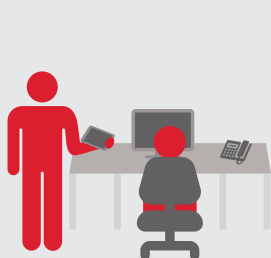
A PROVEN SOLUTION

Based on an open integration industry standard architecture, CCS provides the flexibility and scalability to adapt with your facility's evolving requirements and security needs.

ECOSYSTEM EXPANSION OFFERS FREEDOM OF CHOICE

Proven integration to more than 60 vendors across the globe & API's for rapid integration.

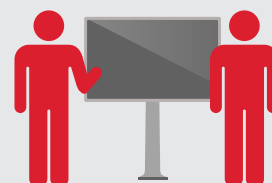
CONFIGURATION OPTIONS FOR OPERATIONAL EFFICIENCY



Command Station
Designed for Occasional Users



Command Consoles
Designed for Security Operators



Command Wall
Designed for Incident Response and Collaboration

A SMART EVOLUTION

Empower your team with a PSIM solution for end-to-end incident management and operational efficiency.



INTEGRATE

Integration framework to unify disparate systems and devices.



ANALYSE

Intuitive analysis and display of data, events and alarms to identify risk.



VERIFY

Intelligent maps for contextual situational awareness to verify risk.



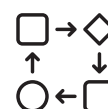
RESOLVE

Incident workflow, standard operating procedures, orchestration for fast resolution of risk.



REPORT

Incident dossier and reporting capabilities for holistic packaging up of events and incidents.



AUDIT

Transparent digital workflows for audit trail.

INTELLIGENT OUTCOMES UNIFY PEOPLE, PROCESS AND TECHNOLOGY



PEOPLE

Security staff, employees, visitors and the general public.

ENHANCED PRODUCTIVITY

Intelligent feature-rich map interface maximizes situational awareness and empowers operators with an optimal user experience requiring less clicks to achieve tasks.

OPERATIONAL INTELLIGENCE

Flexible dashboards transform abundant data into actionable insights for informed decision making to mitigate operational risk.

ENHANCE LIFE SAFETY

Empowering security operators with a best-in-class platform to manage everyday activities and unexpected events more effectively, promoting a safer and more secure environment for all.



PROCESS

Incident management, standard operating procedures, digital transparency & collaborative workflows.

FASTER RESPONSE

Configurable and integrated incident workflows improves the speed and consistency of incident response for optimal outcomes.

REDUCE COMPLEXITY

Seamless integration of disparate systems unified on an intelligent interface for effortless orchestration that reduces complexity and operational siloes.

STREAMLINE WORKFLOWS

A powerful integration rules engine can simplify operator workflows, reducing operator fatigue and promoting vigilance in critical environments.



TECHNOLOGY

Open platform for freedom of choice & future readiness.

FREEDOM OF CHOICE

Unlock access to 60+ third party proven integrations and APIs for freedom of choice of sub-systems and devices

ENTERPRISE GRADE PLATFORM

Robust, scalable and proven platform empowering facilities and high security environments around the globe.

SUPPORTED FUTURE-READY SOLUTION

Generate strong ROI with less intrusive updates and ease of adopting innovation to address evolving requirements and security needs.

For more information

www.buildings.honeywell.com

Honeywell Building Automation

Pacific Head Office
Level 2, 2 Richardson Place,
North Ryde Sydney, NSW
Phone: +61 2 9353 7000
www.honeywell.com

Honeywell Command and Control
Suite PSIM | 01/25
© 2025 Honeywell International Inc.

THE
FUTURE
IS
WHAT
WE
MAKE IT

Honeywell