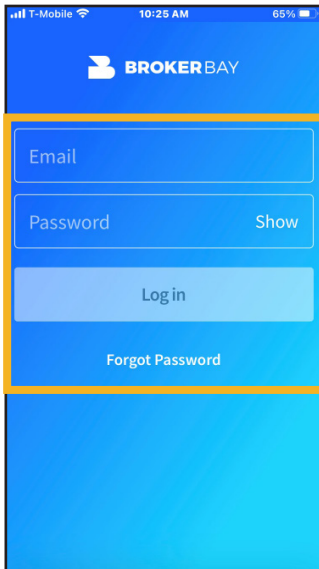


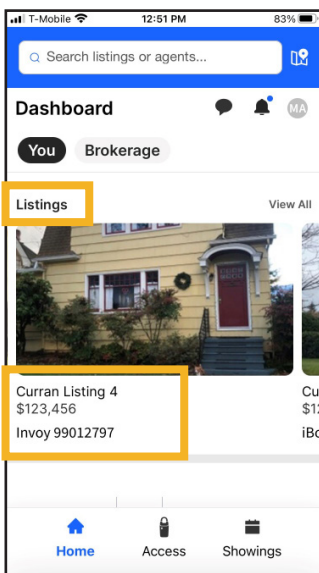
Opening a Lockbox

Using the Supra One Mobile App (As a Listing Agent via Listing Details)

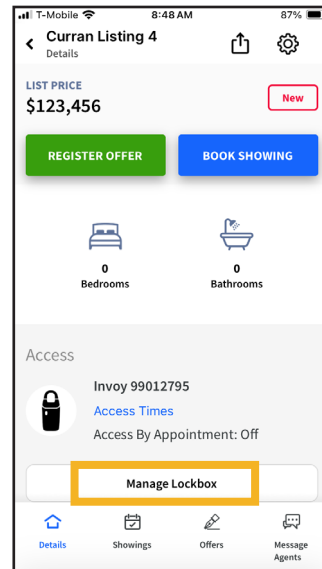
1. Log in to the mobile app.



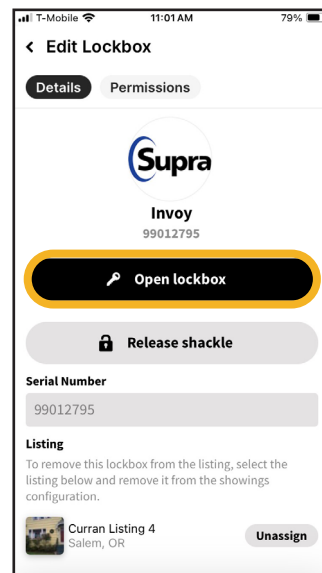
2. Tap any of your listings within the agent dashboard.



3. Tap **Manage Lockbox**.



4. Tap **Open Lockbox**.



suprasystems.com

800-547-0252 • © 2025 Honeywell International Inc. Neither this document nor the information contained herein may be reproduced, used, distributed or disclosed to others without the written consent of Honeywell.

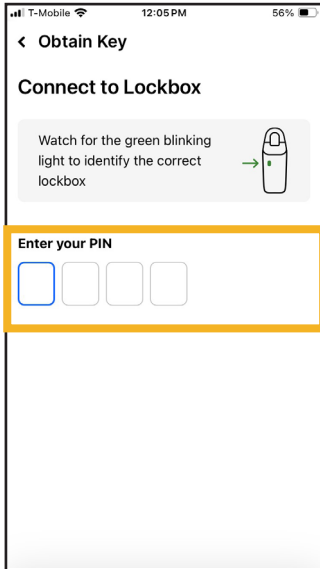
Rev. B

Opening a Lockbox

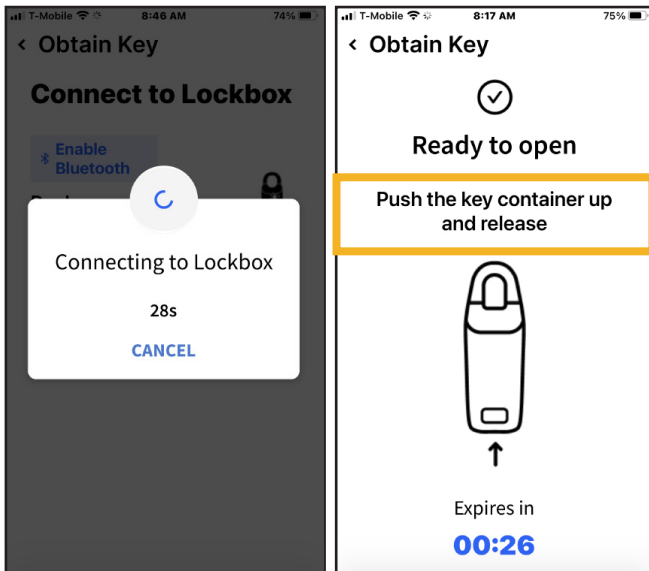
Using the Supra One Mobile App

(As a Listing Agent via Listing Details)

5. Push up on the bottom of the lockbox to turn on Bluetooth® and then enter your PIN on the app.



6. A screen will show the app connecting to the lockbox and then a “Ready to Open” screen appears. Push up on the bottom of the lockbox to access keys.



THIS SECTION INTENTIONALLY LEFT BLANK.



suprasystems.com

800-547-0252 • © 2025 Honeywell International Inc. Neither this document nor the information contained herein may be reproduced, used, distributed or disclosed to others without the written consent of Honeywell.