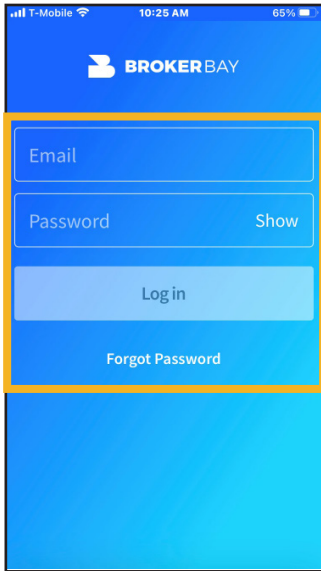


Opening a Lockbox

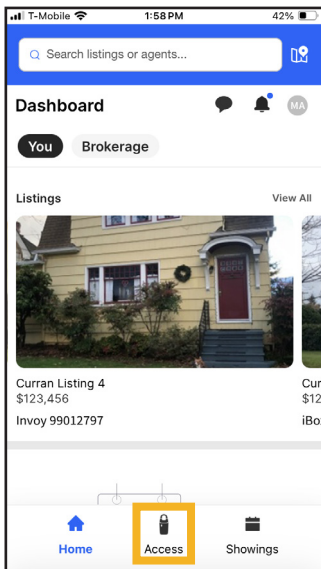
Using the Supra One Mobile App

(Showing Agent without Appointment)

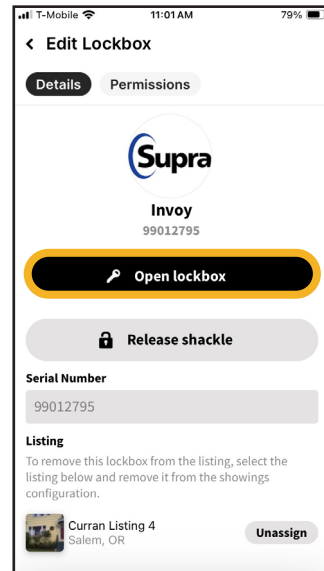
1. Log into the Supra One Mobile App.



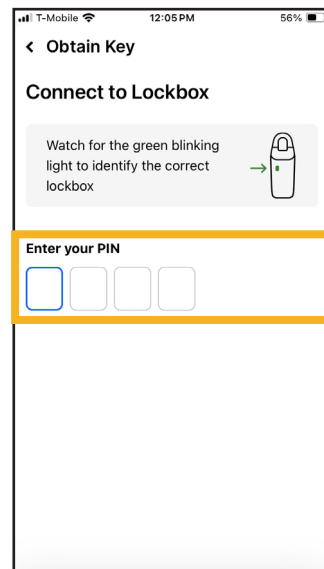
2. From the home screen (i.e. agent dashboard), tap the lock icon labelled “**Access**” in the floating menu at the bottom of the screen.



3. On the relevant lockbox, tap **Open Lockbox**.



4. Enter your PIN on the app. If using BT LE lockbox, push up on bottom to activate Bluetooth. Invoys are always activated.



suprasystems.com

800-547-0252 • © 2025 Honeywell International Inc. Neither this document nor the information contained herein may be reproduced, used, distributed or disclosed to others without the written consent of Honeywell.

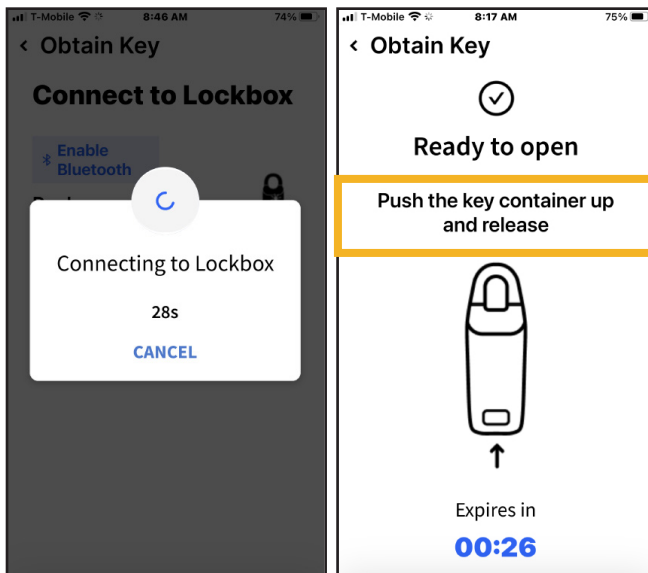
Rev. B

Opening a Lockbox

Using the Supra One Mobile App

(Showing Agent without Appointment)

5. A screen will show the app connecting to the lockbox and then a “Ready to Open” screen appears. Push up on the bottom of the lockbox to access keys.



THIS SECTION INTENTIONALLY LEFT BLANK.



suprasystems.com

800-547-0252 • © 2025 Honeywell International Inc. Neither this document nor the information contained herein may be reproduced, used, distributed or disclosed to others without the written consent of Honeywell.