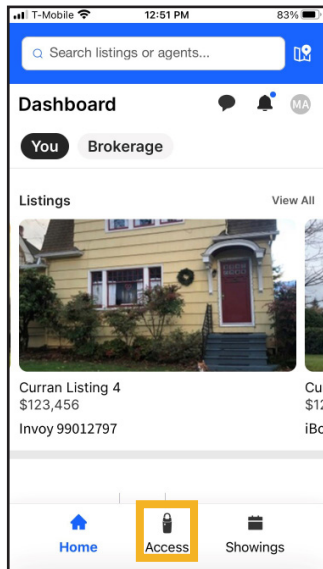


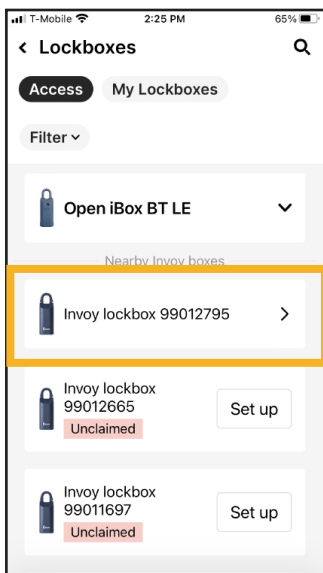
Opening Lockbox Shackle

Using the Supra Mobile App

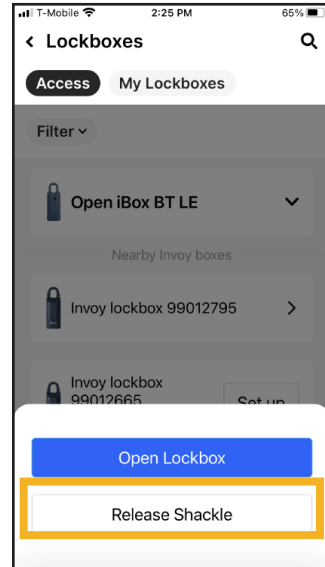
1. From the Supra Mobile App home page, tap **Access** from the menu at the bottom of the screen.



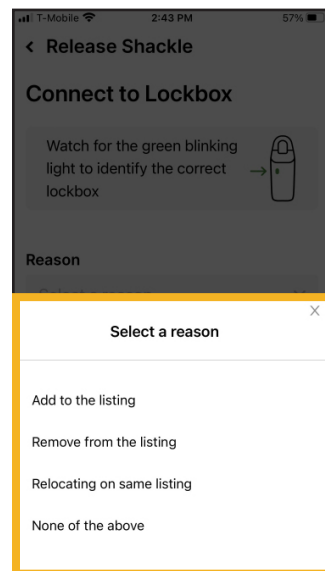
2. Select the relevant lockbox.



3. Select **Release Shackle**.



4. Tap the drop-down box under *Reason*. Select a reason.



suprasystems.com

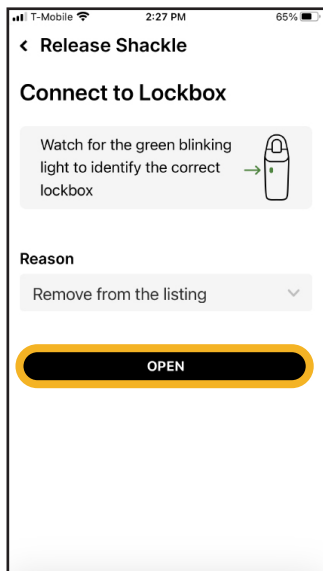
800-547-0252 • © 2025 Honeywell International Inc. Neither this document nor the information contained herein may be reproduced, used, distributed or disclosed to others without the written consent of Honeywell.

Rev. A

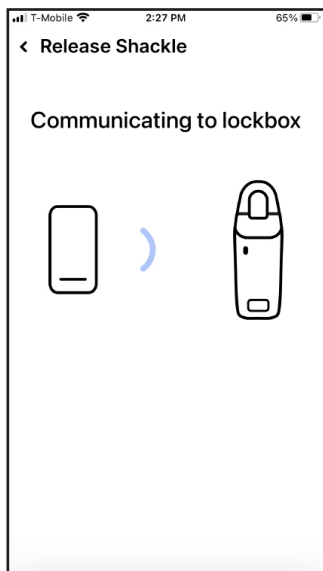
Opening Lockbox Shackle

Using the Supra Mobile App, powered by BrokerBay™

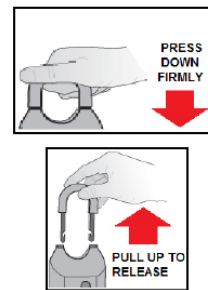
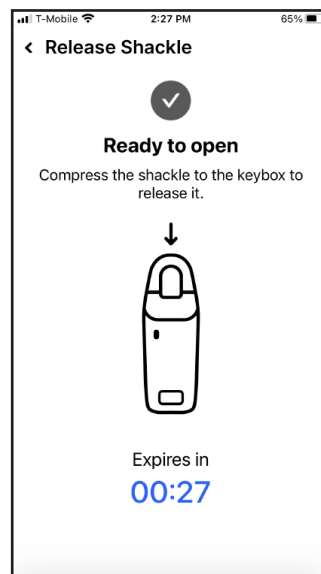
5. Tap Open



6. Press up on the bottom of the lockbox to activate Bluetooth®.



7. When the *Release Shackle* screen appears, compress the shackle then pull up to release it.



suprasystems.com

800-547-0252 • © 2025 Honeywell International Inc. Neither this document nor the information contained herein may be reproduced, used, distributed or disclosed to others without the written consent of Honeywell.