

CAMERA PLUG-INS FOR MILESTONE XPROTECT®

Honeywell camera plug-ins are a set of add-ons that sit on top of Milestone XProtect® VMS for enhancing user productivity, easing operations, and improving user experience to deliver a complete end-to-end video management solution.

IMPROVED PRODUCTIVITY FOR CAMERA INSTALLATION AND MANAGEMENT

- Honeywell camera plug-in for XProtect enables quick installation and updates of a large number of cameras at one time
 - Use the Configuration Tool to list, view, update, and seamlessly configure connected cameras simultaneously
 - Securely import cameras using a simple Excel file
 - Export cameras from an existing system and transfer to another system for quick and efficient setup
- Easily identify Honeywell cameras and their connected status to XProtect VMS
- Automatically access camera web page from XProtect to make any necessary camera configuration changes

INTELLIGENT SEARCH

- Supports analytics attribute search for quicker investigations
 - Search for persons of interest by gender, age, and color of personal clothing
 - Search for vehicles by type (truck, car, motorcycle) and vehicle color
 - Search for license plates by plate number
- Twelve different fisheye dewarping modes for customized navigation and advanced e-PTZ functions (pan, tilt, zoom)



INCREASED OPERATIONAL EFFICIENCY

- Flexible control of turning bounding boxes on/off within a camera view
- Different bounding box colors highlight when an alert occurs - red indicates alarm, green indicates normal activity
- On screen quick controls on XProtect Smart Client providing ability to quickly send Max/Min Zoom commands, Wiper on/off, and enable auto-tracking



Honeywell

COMPATIBLE CAMERAS



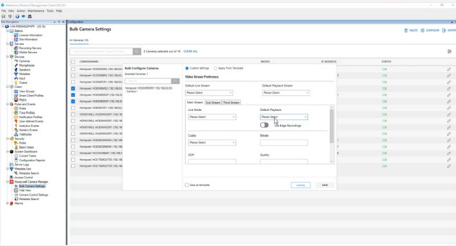
Table 1: Honeywell Compatible Camera Models

	Microdome	Dome	Ball/Turret	Dual Color	Bi-Spectrum	Bullet	PTZ	Fisheye	Pinhole	MultiSensor	Corner
35 Series	●	●	●	●	●	●	●	●	●	-	-
60 Series	-	●	-	-	●	●	●	●	-	●	-
70 Series	-	●	-	-	-	●	●	-	-	-	●

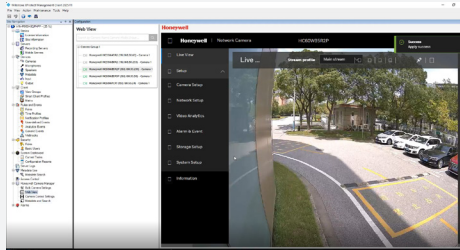
● Supported
- Form factor not available in Series

PLUG-IN FEATURES

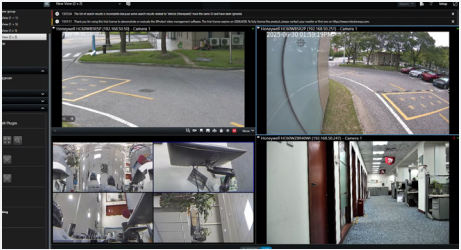
Bulk Configuration



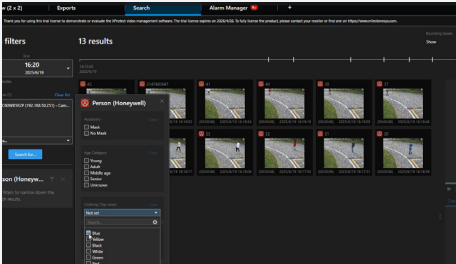
Camera Web View



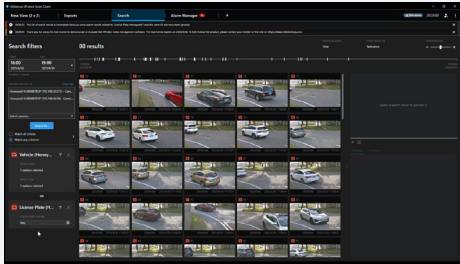
On-Screen Camera Controls



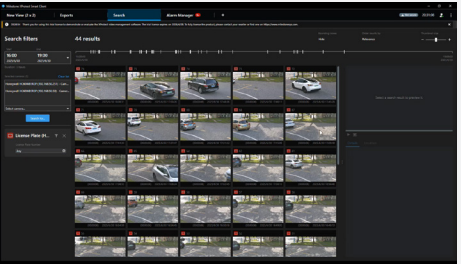
Person Search



Vehicle Search



LPR Search



MILESTONE COMPATIBILITY

Honeywell camera plug-ins are compatible with Milestone XProtect 2025 R2, 2025 R1, 2024 R2, 2024 R1

For a complete list of supported Honeywell camera devices, please visit following Milestone Web Page(s):

[Milestone Technology Partners – Honeywell](#)
[Find Supported Devices for Milestone XProtect® VMS](#)

For More Information
buildings.honeywell.com/security

Building Automation
Commercial Security
715 Peachtree St NE
Atlanta, GA 30308
1.800.323.4576

Milestone, Milestone logo and Milestone XProtect are trademarks or registered trademark of Milestone Systems A/S.
All other trademarks are properties of their respective owners.
Honeywell reserves the right, without notification, to make changes in product design or specifications.

HBA-SEC-MILESTONE-CPLUGIN-FLY-US-EN-0925-V1
© 2025 Honeywell International Inc.

