

NetBox Global® 4.0

Overview

NetBox Global is a next-generation solution for managing distributed NetBox systems, designed to meet the evolving needs of large, multi-site organizations. It offers flexible, scalable architecture that supports virtually unlimited expansion, allowing users to build and manage a comprehensive ecosystem of LenelS2 appliances under a single, centrally controlled network. This is achieved while preserving the appliance-based design and intuitive web browser interface that have long defined LenelS2 NetBox security management systems.

NetBox Global empowers organizations to deploy security infrastructure that can be managed centrally, remotely, or through a hybrid approach. As an organization's physical footprint grows or its security requirements change, the system scales effortlessly without requiring significant investment in communication infrastructure. This makes it an ideal solution for distributed enterprises seeking robust security without added complexity.

A key strength of NetBox Global lies in its support for Global Security Operations Center (GSOC) functionality, which enhances situational awareness and streamlines incident response across the entire network.

The built-in Alarm Workflow page provides real-time alarm notifications, automated incident response workflows, and customizable alert settings. It also supports duty log entries, quick launch to NetBox UI, and threat-level escalation.

NetBox Global is engineered to support a wide range of applications—from enterprise-scale deployments to campus environments and property-management scenarios. Whether implementing remote-managed access control or building a centralized GSOC, LenelS2's Professional Engineering Services (PES) are available to help design and configure a solution tailored to your specific needs. Consultation and system commissioning services further ensure successful implementation and long-term performance.

Key Features

- Partition Tiles provide ease of navigation, system monitoring, and quick launch tools
- Alarm Workflow, a GSOC feature implemented natively in NetBox Global UI
- OIDC OKTA and Cisco DUO SSO for easier and more secure access
- LDAP user authentication provides an alternative layer of security for user management
- NetBox Global API enhances integration capabilities and data retrieval
- UI enhancements for improved usability
- Custom History Reports for tailored reporting based on user preferences and requirements
- VMware and Hyper-V support
- Ubuntu 24 embedded, ensuring the latest and most secure operating environment

Benefits

- Build a distributed network out of LenelS2 NetBox systems in just a few hours
- Conveniently manage any remote system from NetBox Global with a single mouse click
- Easily scale to hundreds of locations on a single NetBox Global server
- Access control database can be managed centrally, remotely, or both with changes immediately reflected everywhere
- Build and easily administer global access levels that grant access permission across your organization

Network Global 4.0

Monitor > Alarm Workflow

Partition Group(s): Central HQ x 5

Launch Unlock Threat Level

ID	Date/Time	P	Description	Location
170	10/06, 19:05:37	10	Door Held Open 3rd Floor Lobby	Central HQ
132	10/06, 16:01:26	10	Door Held Open 3rd Floor Lobby	Central HQ
166	10/06, 15:17:38	15	Access Granted 3F SE	Central HQ
163	10/06, 13:38:30	10	Door Held Open 3rd Floor Lobby	Central HQ
153	10/06, 13:38:05	15	Access Granted 3F SE	Central HQ
144	10/06, 13:28:07	1	Access Denied 3F SE	Central HQ

Activity Log

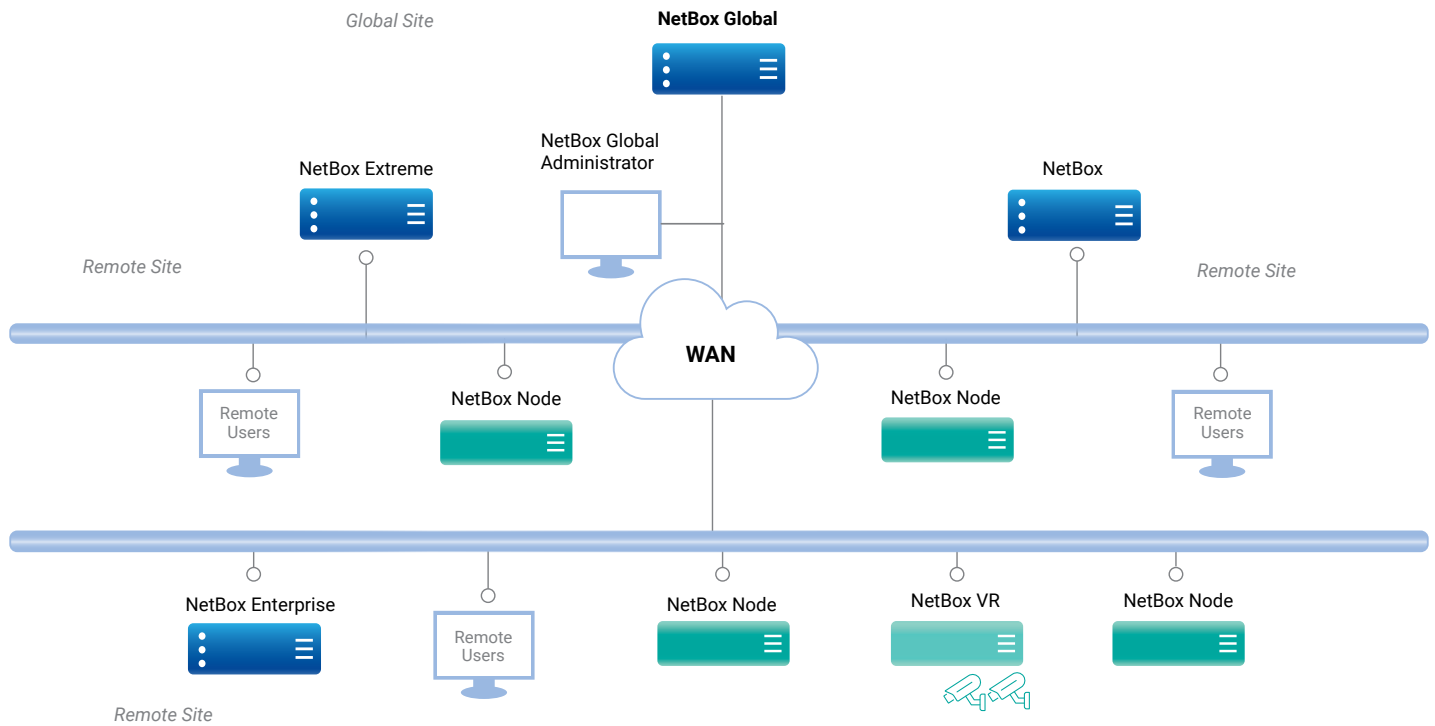
Date/Time	Partition	Description
12/15/12 AM	Central HQ	System backup successful
12/15/12 AM	Central HQ	System backup in progress
12/15/12 AM	Central HQ	System backup started
11/16/2025, 9:35:16 PM	Central HQ	Alarm Acknowledged for Global System Admin for Door Held Open 3rd Floor Lobby
11/16/2025, 9:35:16 PM	Central HQ	Event deactivated for Door Held Open 3rd Floor Lobby
11/16/2025, 9:35:12 PM	Central HQ	Alarm Acknowledged for Global System Admin for Door Held Open 3rd Floor Lobby
11/16/2025, 10:36:14 AM	Central HQ	Duty log entry by Global System Admin
11/16/2025, 12:15:12 AM	Central HQ	System backup successful
11/16/2025, 12:15:12 AM	Central HQ	System backup in progress
11/16/2025, 12:15:05 AM	Central HQ	System backup started
11/16/2025, 12:17:58 AM	Central HQ	Log archive succeeded
11/16/2025, 12:15:16 AM	Central HQ	Log archive succeeded
11/16/2025, 12:15:16 AM	Central HQ	System backup successful
11/16/2025, 12:15:16 AM	Central HQ	System backup in progress

Monitor > Partitions

Partition Group(s):

All Activity

Date/Time	Category	Description
11/16/2025, 8:33:41 PM	Global	Logged in to Global IP Address 10.51.229.20 by Global System Admin
11/16/2025, 8:31:04 PM	Global	Session expired on Global IP Address 10.51.229.20 by Global System Admin
11/16/2025, 7:56:11 PM	Global	Logged in to Global IP Address 10.51.229.20 by Global System Admin
11/16/2025, 7:52:04 PM	Global	Logged out from Global IP Address 10.51.229.20 by Global System Admin
11/16/2025, 5:47:15 PM	Global	Logged in to Global IP Address 10.51.229.20 by Global System Admin
11/16/2025, 5:47:15 PM	Global	Session expired on Global IP Address 10.51.229.20 by Global System Admin
11/16/2025, 4:56:38 PM	Global	Logged in to Global IP Address 10.51.229.20 by Global System Admin
11/16/2025, 4:56:38 PM	Global	Session expired on Global IP Address 10.51.229.20 by Global System Admin
11/16/2025, 4:22:59 PM	Global	Logged out from Global IP Address 10.51.229.20 by Global System Admin
11/16/2025, 4:06:48 PM	Global	Session expired on Global IP Address 10.51.229.20 by Global System Admin
11/16/2025, 3:55:16 PM	Central HQ	Alarm Acknowledged for Global System Admin for Door Held Open 3rd Floor Lobby
11/16/2025, 3:55:16 PM	Central HQ	Event deactivated for Door Held Open 3rd Floor Lobby
11/16/2025, 3:55:12 PM	Central HQ	Alarm Acknowledged for Global System Admin for Door Held Open 3rd Floor Lobby
11/16/2025, 3:55:12 PM	Global	Logged in to Global IP Address 10.51.229.20 by Global System Admin
11/16/2025, 2:19:51 PM	Global	Session expired IP Address 10.51.229.20 by Global System Admin
11/16/2025, 10:36:14 AM	Central HQ	Duty log entry by Global System Admin



Schematic only – not a network diagram.

Specifications – Network Global 4.0

Access Control	
Cardholders	No practical limit
Online transactions	100 million
Available access levels	No practical limit
Unique user privileges	No practical limit
Simultaneous users	35
Readers, inputs, outputs	No practical limit
Virtual Appliance	
Hypervisor support	VMware 6.7 or higher, Windows Server 2019 Hyper-V or higher
Cloud support	AWS coming Q1 2026
Appliance OS	Ubuntu 24.04 LTS
Minimum vCPU	8 vCPU
Minimum RAM	32GB
Storage	2TB
Hardware Appliance	
Processor	Intel® Xeon® 6353P 2.7GHz
RAM	128GB
Hard drive	4 (960GB) SSD configured in RAID 10
Capacity	1.92TB
Warranty	3 years
Dimensions	1.68in x 18.97in x 23.04in
Weight	19.5 lbs
Operational temperature	+10 to +35 degrees C
Storage temperature	-40 to +65 degrees C
Power supply	Dual, (1+1) Redundant, Hot-Plug, 600W MM (100-240Vac)
BTU	2250/hr
OS	Ubuntu 24.04 LTS

Client Requirements	
Browser support	Google Chrome™, Microsoft Edge, Mozilla Firefox®, Apple Safari®
Screen resolution	1920x1080 and higher
Part Numbers	
S2-GLOBAL-VM	NetBox Global Virtual Appliance providing centralized management for multiple NetBox controllers
S2-GLOBAL-G3	NetBox Global Physical Appliance providing centralized management for multiple NetBox controllers
S2-F-GLOBAL-G3	Forward Program for existing NetBox Global Servers running 3.1.4 or earlier
S2-GLOBAL-PRO-DEV	NetBox Global software consulting services and development efforts – required for new Global systems



For more information, please visit lenels2.com.

Specifications subject to change without notice.

© 2025 Honeywell International Inc. All trademarks and service marks referred herein are property of their respective owners. 2025/12